

# REBEL TRIKE XR OWNER'S MANUAL



[www.14STX.com](http://www.14STX.com)

[service@14STX.com](mailto:service@14STX.com)

602-308-8711



## Table of Contents

Specifications	Page 3
General Operation	Page 4
Speed Control	Page 5
Safety Info	Page 6
Warranty	Page 7
Assembly	Page 8

## Rebel 3-Wheel Specifications

- High-output, High Torque Waterproof Motor
- (2) 60v Lithium Ion Battery Packs
- Approx. 12/18 mph speed ( lockout for golf course safety)
- Weight Capacity 300 lbs.
- Scooter Weight- 190 lbs.
- 225/40-10 Tubeless Tires on Chrome Rims
- 94" L x 37" W x 44" H
- Packing crate- 80" L x 36" W x 44" H, 390 lbs.
- Front and Rear Hydraulic Disc Brakes
- 60 volt, 4amp Charger
- LED Headlight
- One Year Parts Warranty
- Cooler
- Sand Bottle
- Scorecard Holder

## Operation of Fat Tire Golf Trike XR

1. Insert key and turn clockwise. Display will light up showing the battery status.
2. When ready to ride, with both feet on the floorboard, **slowly** twist the throttle toward you while keeping your left fingers **on the brake handle, ready to brake**. Drive a very short distance and apply the left brake. Do this 2-3 times until you get familiar with the throttle and braking.
3. If parking on a hill, apply the left safety brake by pulling in on the handle and pushing down the locking pin. To release, simply pull in the lever and release the locking tab.
4. For reverse, hold the green button with your right thumb while turning the throttle (Some models have a F/R switch instead, in place of the 1,2,3 speed switch)
5. Speed lock can be removed by activating the small switch near the upright battery under the seat.



### Charging the battery:

The Rebel Fat Tire Golf Scooter Trike XR is equipped with dual 60 volt 20ah lithium ion batteries. The batteries can be charged on-board through the port in front of the floorboard (or the battery can be removed from under the seat or floorboard and charged remotely). It takes approximately 6 hours to fully charge the battery. Use only the charger provided, or a 60v charger specifically designed for lithium batteries. The charger has a red light to indicate the battery is being charged, and a green light when fully charged.

Remove the charger from the battery after charging.



## Speed Control on Fat Tire Golf Rebel Trike XR

Upon unpacking the Rebel Trike XR the speed will be limited at approximately 18 km/h (11 mph). The 1,2, 3 switch near the throttle is disabled so moving to the 2 or 3 position will not change the top speed of the trike.



If desired, the speed switch can be activated by the hidden red lockout switch located under the seat in the recessed area of the battery handle.

Importers that want to disable the lockout switch to keep speed below 20 km/h can simply unplug and remove the switch.

Red Lockout Switch



## Safety Tips

Safety tips for the Fat Tire Golf Scooter (FTGS) include:

1. Pay attention to your surroundings at all times. Make sure you are comfortable with the throttle and hand brakes before going out on the course.
2. **Be careful with your speed.** Avoid obstacles or sharp turns. **Use your brakes when going downhill to avoid excessive speed.**
3. The FTGS should be kept **at least 10 feet from the tees and greens.**
4. **Do not** ever put multiple people on the same FTGS.
5. Be careful and always pay attention.
6. **Stay clear of mud, sand, loose dirt or gravel, and water.**
7. **The FTGS is not a toy** and is not to be ridden by children under the age of 18.
8. Do not enter areas that are identified as not safe for the FTGS
9. **Never ride down hills that put your safety and the FTGS at risk. Walk your FTGS down steep slopes and areas where advised by the course.**
10. Do not take the FTGS over curbs as this can cause serious damage.
11. Do not operate FTGS under the influence of alcohol or drugs.



Always ride straight up and straight down hills to avoid tipping or rollover. Do not ride sideways on hills. Maintain a controlled speed on downhill riding and avoid quick turns.

## Assembly

Remove Charger from Cooler

Plug charger into port on scooter

And into 110v standard outlet

Charge until green light illuminates.



Slide handlebar bracket onto the two front  
Chrome forks and tighten the large 12mm  
Bolts



Attach bag holder to rear pan using the  
4 bolts on the bag holder bar



Turn key on and display will light showing 00  
For speed and battery status. Speedo is in km/h  
(not accurate), and/or may be disabled on golf models.  
Display is only used for battery status  
and turn indicators.





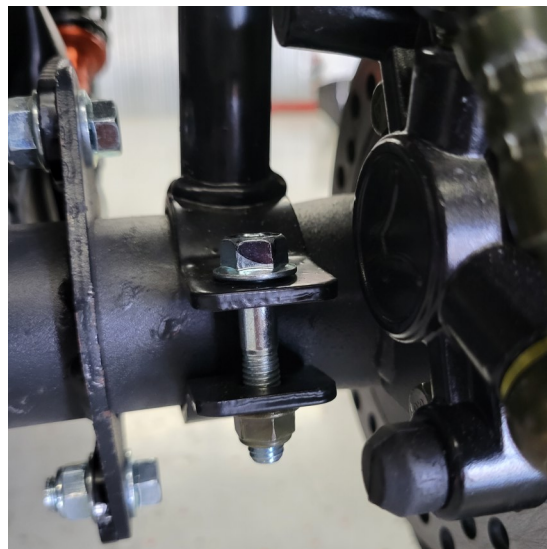
## Assembly (continued)

Remove rear fenders from wrapping. Fenders are shipped already attached to fender bracket.

Insure all four screws are tight to secure fender to bracket.

Use 8mm bolts to attach fender bracket to the rear axel.

Adjust fender to allow sufficient space between fender and tire and tighten the bolt to secure the bracket in place.





# Warranty

The Fat Tire Golf Scooter warranties all parts against manufacturers defects for a period of ONE year.

FTGS will, at their discretion, replace or repair any item found to be defective, including:

- Frame
- Motor
- Controller
- Battery
- Throttle
- Handlebar switches
- Brake Calipers and Master Cylinders
- Bag holder and attachment brackets
- Aluminum brackets for cooler and scorecard holder

**NOTE:** Wear items such as tires, brake pads, rubber parts, seat fabric and cushions, cooler, sand bottle, light bulbs, etc. are NOT included. Accessories (ball washer, canopy, etc.) NOT included.

**Labor costs are NOT covered by warranty**

ANY DAMAGE OR DEFECT OCCURRING FROM THE MISUSE OF THE SCOOTER IS NOT COVERED.

Warranty starts from the time scooter is delivered to your home or facility.

14 STX Fat Tire Golf Scooter  
13232 N. Cave Creek Rd.  
Phoenix, AZ 85022  
[www.14STX.com](http://www.14STX.com)